

WINTER STORM UPDATE



January 4, 2024

Hello,

As you may have heard, we are expecting a snow storm this weekend, Saturday into Sunday. Please be sure that your vehicles are parked off the roadway so that our crew can plow as efficiently as possible. As a reminder, there is a parking ban in effect from December 8, 2023 through March 30, 2024. In anticipation for the storm, the Cornwall Transfer Station will be closed on Sunday, January 7th.

Anything that you can do to prepare for a storm will certainly help. Below is a list of what you can do before and during a storm, and we have included a Storm Safety Checklist from Eversource.

Before the storm: Stock up on non-perishable items for your family and pets, fully charge your cell phones and additional battery packs, be sure to have adequate medical supplies and prescriptions needed on hand, fuel up or charge vehicles, check in on your neighbors to see if they need any help, and test your generator if applicable.

During the storm: Stay home if possible, to report power outage you can text "OUT" to 23129 or call 800-286-2000, to report downed wires call 911.

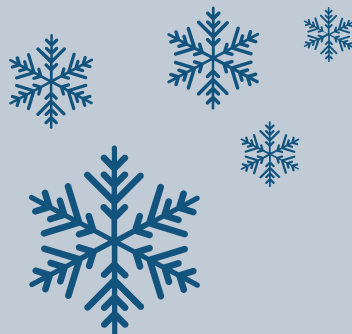
If you have any concerns, you can call the Selectmen's office and leave a message, we will return your call as soon as possible. As always, if there is a true emergency be sure to call 911.

Stay Safe!

Sincerely,

Gordon M. Ridgway
1st Selectman

Jane Hall
Administrative Assistant



CONTACT US

email: selectmen@cornwallct.gov
phone: 860-672-4959

email: assistant@cornwallct.gov

Storm Safety Checklist

EVERSOURCE

BEFORE THE STORM

With the first signs of an approaching storm, make sure you have what you need.

- Build an emergency kit with the essentials, including first-aid supplies.
- Be attentive to severe weather warnings. Have a battery-powered radio available.
- Make sure you have adequate medical supplies and prescriptions.
- Have extra cash on hand in case ATMs don't work.
- Stock up on non-perishable canned goods and pet food.
- Fully charge your cell phone and a portable, phone-charging battery pack.
- Download the free Eversource mobile app to report outages or check for updates.

Prepare Your Home/Vehicle/Generator:

- Test smoke and carbon-monoxide detectors for proper operation and battery life.
- Fill large containers with water for drinking and fill the bathtub with water to flush toilets.
- Have access to flashlights, extra batteries, candles and matches.
- Make sure your vehicle is fully fueled and/or charged.
- Be prepared to cook outside with a charcoal or propane grill.
- If you have a generator, test the properly installed generator-transfer switch. Have extra gasoline stored safely outside.

If You Rely on a Home Medical Device:

- Contact Eversource to be notified when major storm events are anticipated, if you are not already on the medical device notification list.
- Prepare for the potential for power outages. This includes switching to backup power or moving to an alternate location, if necessary.

DURING THE STORM

Power outages do happen. When they do, Eversource works to safely and quickly restore service.

- Unplug your sensitive equipment if you don't have surge protectors.
- Report a power outage quickly online at [Eversource.com](https://www.eversource.com) or call Eversource.
- Stay as far away as possible from any downed wires outside your home.
- Leave your home if authorities order an evacuation.

Generators:

- Never install a generator inside – even if windows are wide open. Generator exhaust contains carbon monoxide that can kill within minutes.
- Place your generator well away from your home, making sure exhaust cannot enter through windows or doorways.
- Never try to power your house with a portable generator plugged into a household outlet.

AFTER THE STORM

Even after a storm has passed, it is important to remain alert until restoration work is completed.

- Stay as far away as possible from downed wires and never drive over a power line. Assume all downed wires are “live” and dangerous.
- Call 911 immediately to report downed wires to local fire and police.
- Never touch anything that may be in contact with a downed wire, including trees, fences, guardrails or puddles of water.
- If all of your neighbors have their power back on, but yours is still out, report your outage again by contacting Eversource.
- Check your appliances for damage. Plug in and turn them on one at a time to avoid a power surge.
- After a prolonged outage, check food in your refrigerator or freezer carefully for freshness.
- Do not enter damaged buildings. In the event of a gas leak, even the tiniest spark from a phone, flashlight, electrical appliance or a match could ignite the gas.

Emergency Shelter

If you or your family need heat, air conditioning, or a more comfortable place to wait out a power outage, call your local fire or police department or local Red Cross chapter to locate an emergency shelter.

Report a Power Outage

Online at [Eversource.com](https://www.eversource.com),
on the Eversource app, or call 24/7:

Connecticut: 800-286-2000 E. Massachusetts: 800-592-2000
New Hampshire: 800-662-7764 W. Massachusetts: 877-659-6326